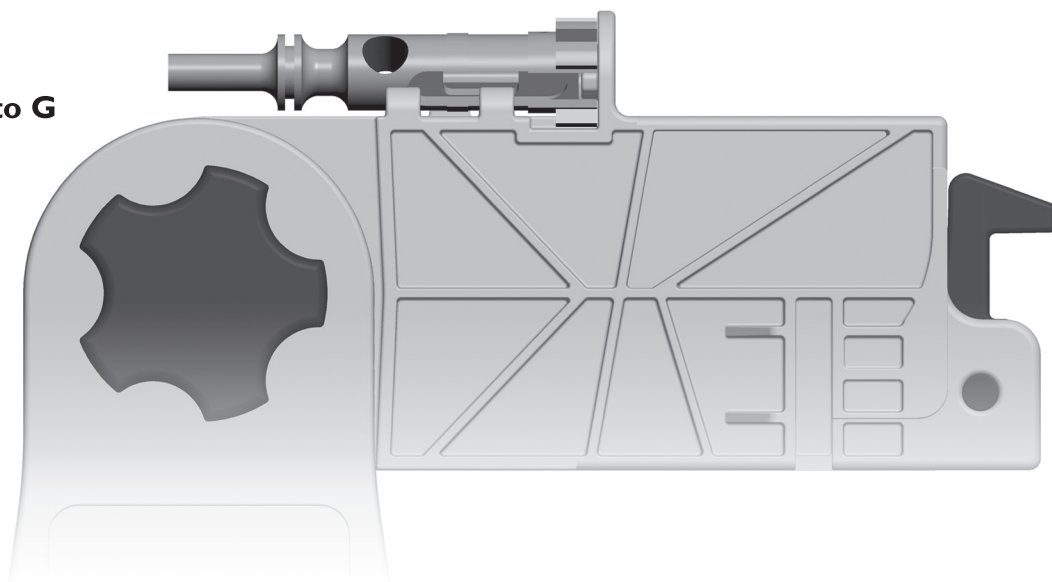


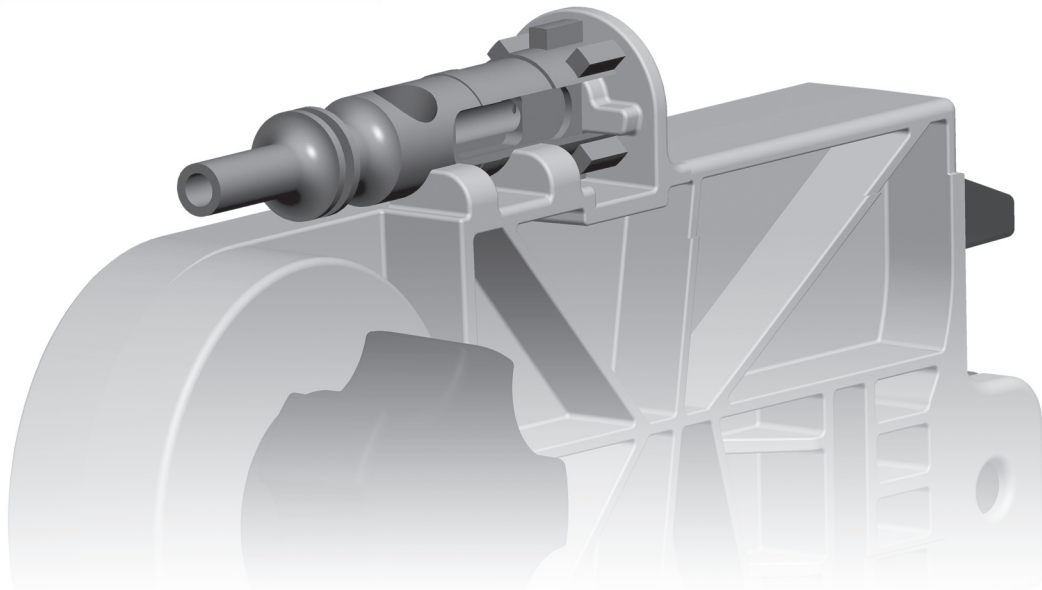
Photo G



4. Once the bolt is in position, push the bolt forward depressing the ejector spring and turn counter-clockwise until the bolt-lugs stop. (See Photos G & H)

5. The bolt is now held hands free to remove the ejector roll pin. TIP: use the # 6 I I-520 pin punch from the Wheeler Deluxe Screw Drive Kit.

Photo H



## HAMMER STOP FUNCTION:

The Vise Block includes a Hammer Stop to protect the lower receiver while dry firing.

1. Once the receiver is installed onto the Vise Block, simply rotate the hammer block into position. (See Photo I)

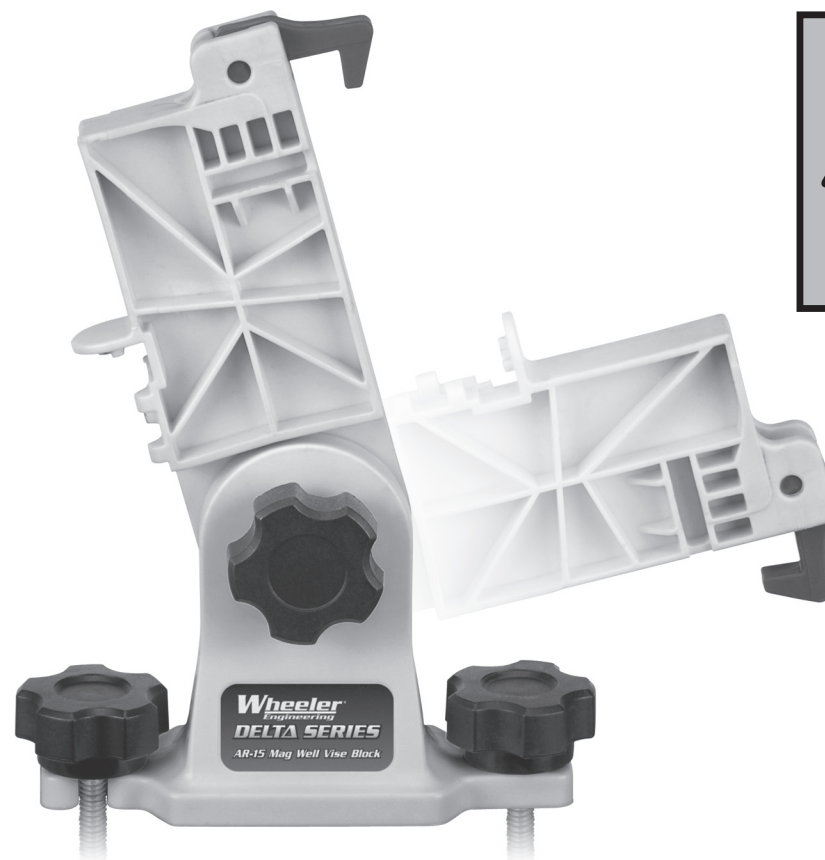
Photo I



# Wheeler<sup>®</sup> Engineering **DELTA SERIES**

Product #I56211  
Instruction #I019882

## AR-15 Mag Well Vise Block



	<b>WARNING:</b> IMPORTANT SAFETY INFORMATION! <ul style="list-style-type: none"><li>• To avoid serious injury or death, follow this safety information.</li><li>• Always practice safe firearm handling.</li><li>• Make sure firearm is unloaded before using this product.</li><li>• Keep these instructions for future use.</li></ul>
--	--



## STOP!

If you have a problem with this product, **DON'T RETURN IT TO THE STORE WHERE YOU PURCHASED IT.** Contact customer service at...

**Battenfeld**<sup>™</sup>  
Technologies, Inc.

5885 West Van Horn Tavern Road / Columbia, MO 65203  
573-445-9200 / Email: [sales@battenfeldtechnologies.com](mailto:sales@battenfeldtechnologies.com)  
Or visit our website @ [www.battenfeldtechnologies.com](http://www.battenfeldtechnologies.com)

## NOT WARRANTED AGAINST MISUSE, ABUSE, OR COMMERCIAL USE.

### Limited Warranty

Every Wheeler product is warranted to be free of defects in materials and workmanship for a period of one (1) year from the date of original purchase. Wheeler will, at its option, repair or replace without charge, except for transportation costs, parts that fail under normal use and service when operated and maintained in accordance with our Instructions. This warranty does not apply to normal wear or to items whose life is dependent upon their use and care. This warranty is in lieu of all other warranties, expressed or implied and releases Wheeler, its affiliates, and its vendors from all other obligations and liabilities.

**BEST GUN VISE USAGE:**

The AR-15 Mag Well is designed to mount anywhere along the T-Rail of the Tipton Best Gun Vise. (See Photo A)

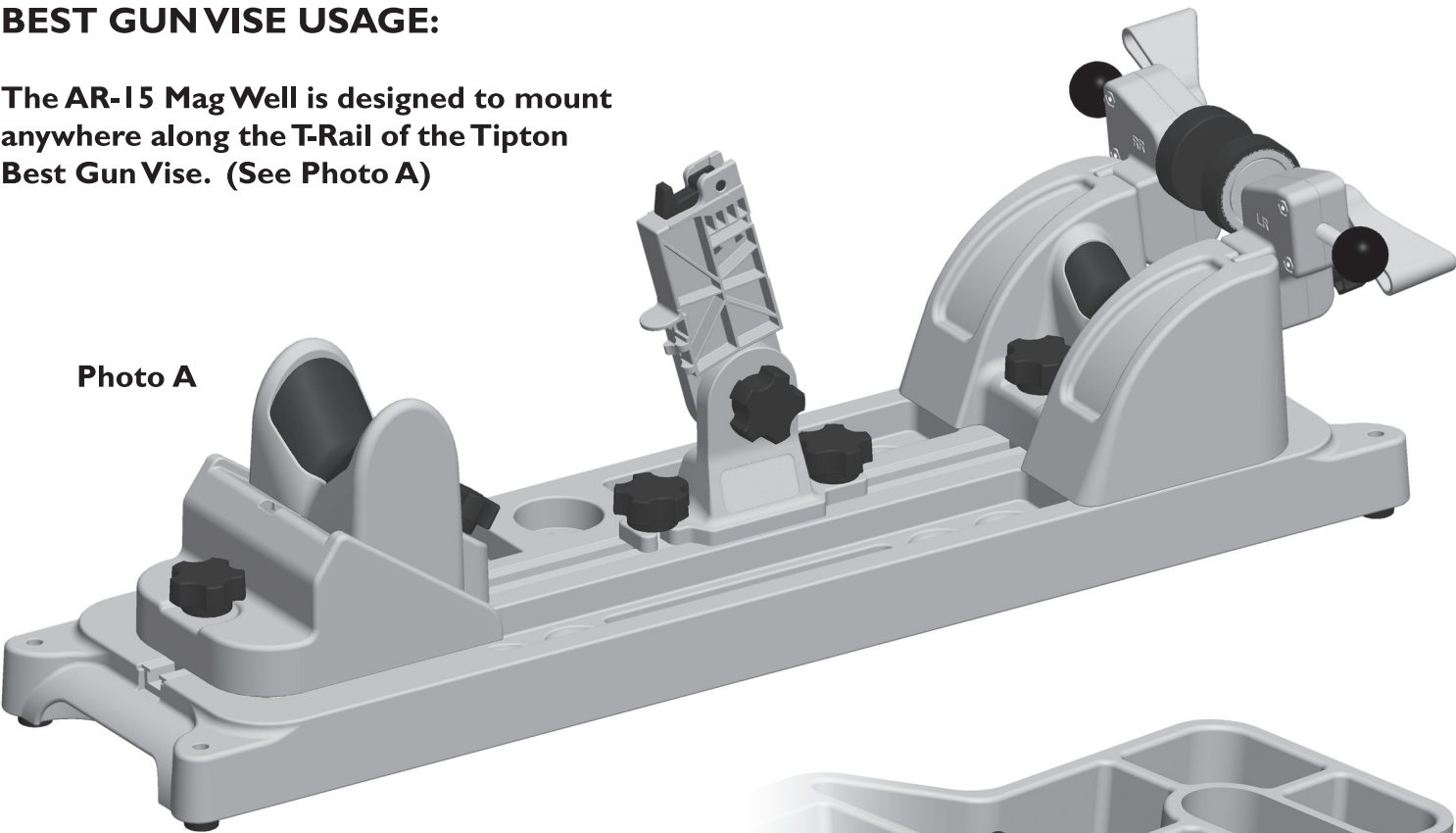


Photo A

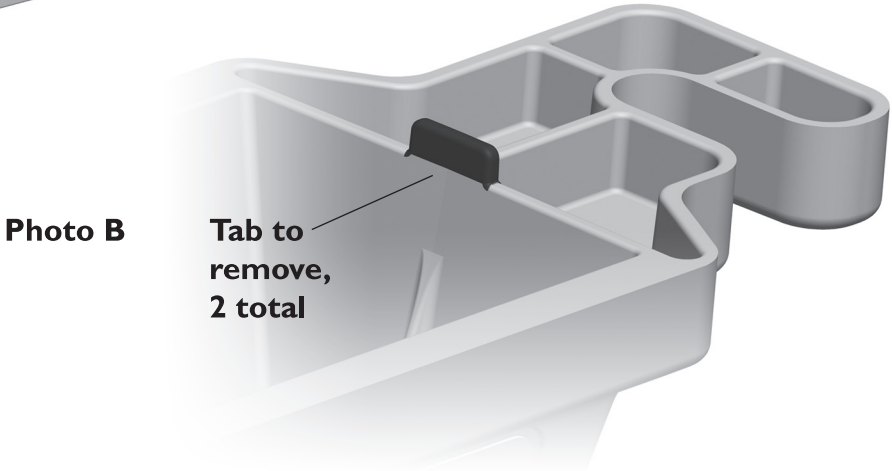


Photo B

**BENCH TOP USAGE:**

The AR-15 Mag Well can easily be modified to mount on a bench top. Required tools - safety glasses, pencil, hand pliers, hand drill, 5/16” drill bit

1. Using a pair of pliers, break the two small tabs flush with the bottom of the AR-15 Mag Well base. (See Photo B)
2. Place the base in the desired location of your bench top and mark each hole location.
3. Carefully drill the marked locations, be sure to keep the drill perpendicular to the bench top.
4. Place the AR-15 Mag Well into position.
5. Place a washer on each hex bolt and insert into the base on either side.
6. Complete the assembly by attaching a nut to each 5/16 hex bolt, be careful not to over tighten. (See Photo C)

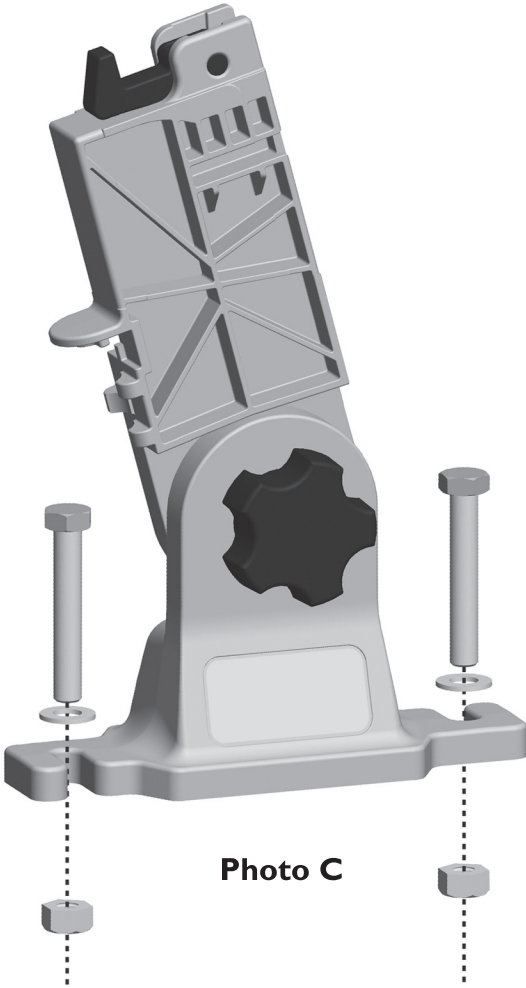


Photo C

**BOLT SERVICE STATION:**

1. Before attempting to remove the ejector, you must first remove the extractor. This can be done by simply pushing the extractor pin through the body of the bolt. TIP use the # 550-067 pin punch from the Wheeler Deluxe Screw Driver Kit. (See Photo D)

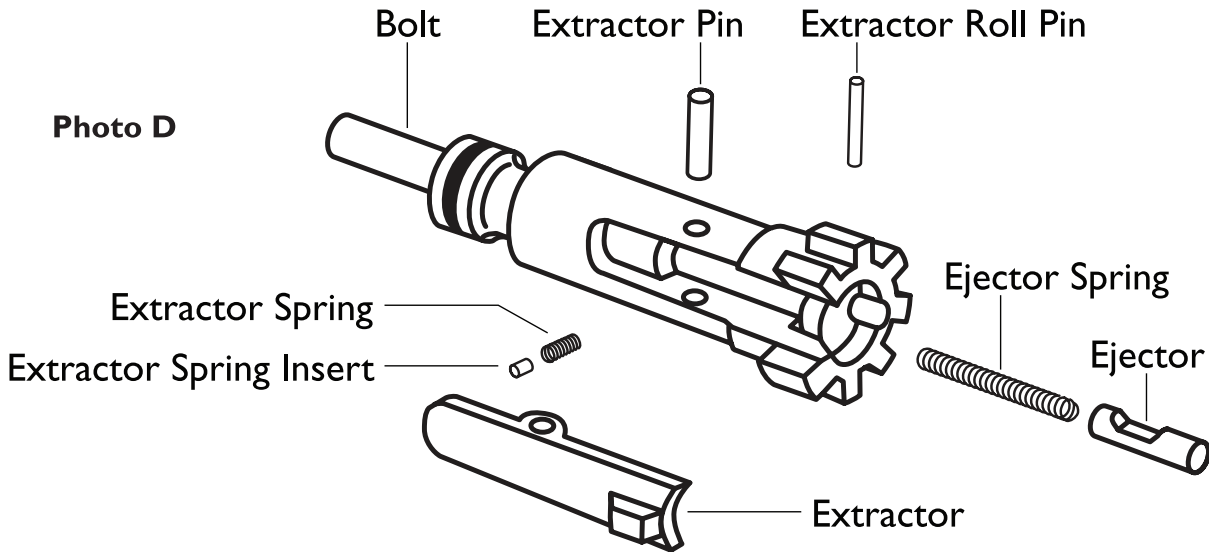


Photo D

2. Once the Extractor has been removed, insert the bolt in such a fashion that the locking lugs straddle the bolt lug retaining rib located on the side of the Vise Block. (See Photo E)

3. Carefully position the bolt as shown in Photo F, rotating slightly clockwise to allow the bolt lugs to pass over the bolt-lug retaining rib as mentioned above.

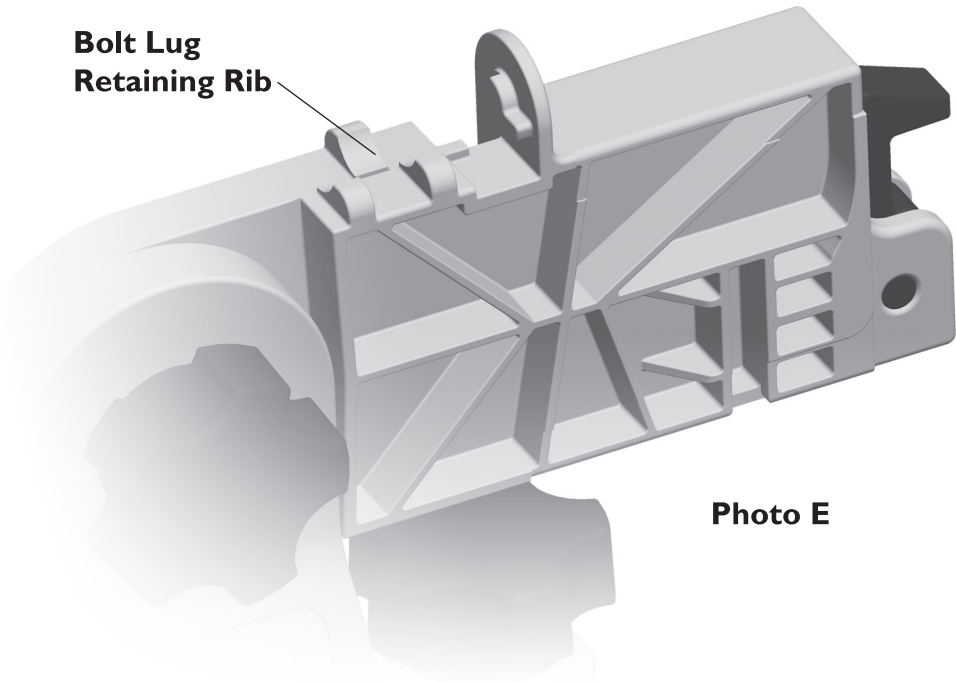


Photo E

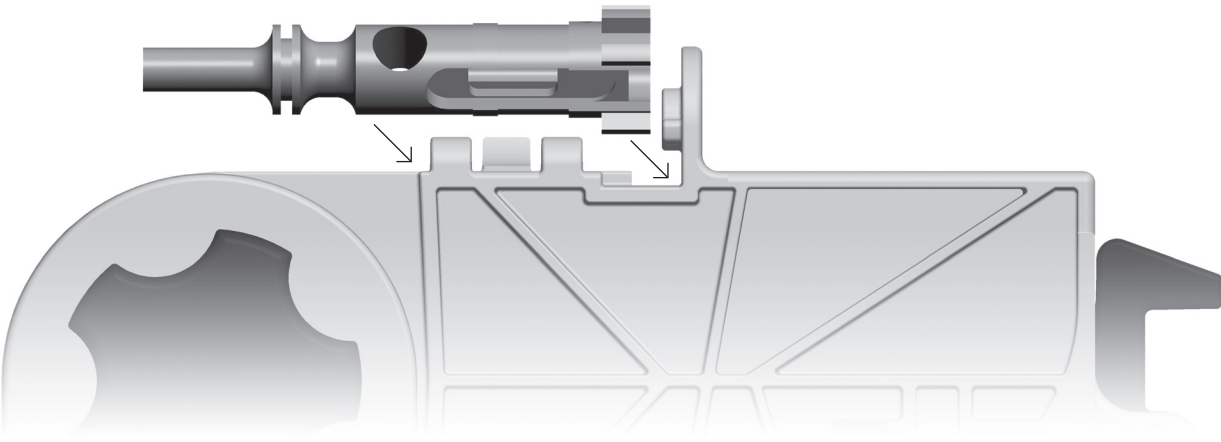


Photo F